

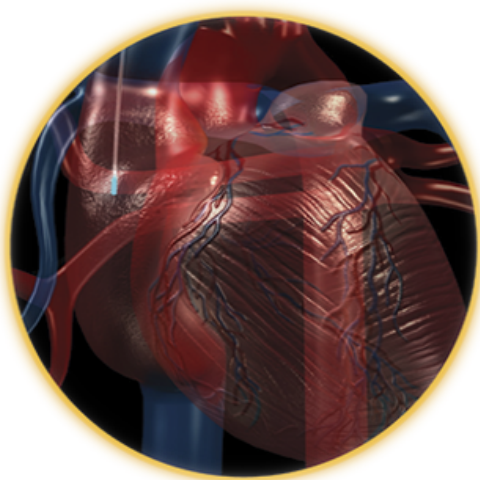
# LUNCH & LEARN

## REFINING PHYSIOLOGICAL MONITORING

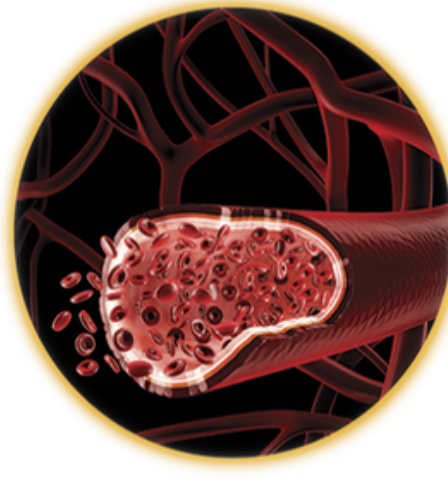
### Non-invasive and minimally invasive techniques

Tuesday  
21 Nov, 2023

12:00- 13:00



**CARDIOVASCULAR**



**METABOLISM**



**NERVOUS SYSTEM**

#### AGENDA

- The importance of proper physiologic monitoring
- The role of radiotelemetry in cardiovascular, neurological and metabolic monitoring
- Q&A



Lille anatomisk auditorium, 1231-424. Universitetsparken 231, 8000 Aarhus



Registration via [fvandewiele@datasci.com](mailto:fvandewiele@datasci.com) and [phenotyping@biomed.au.dk](mailto:phenotyping@biomed.au.dk)  
(free but mandatory)



Free lunch provided for registered participants (deadline: 14/11/23)